

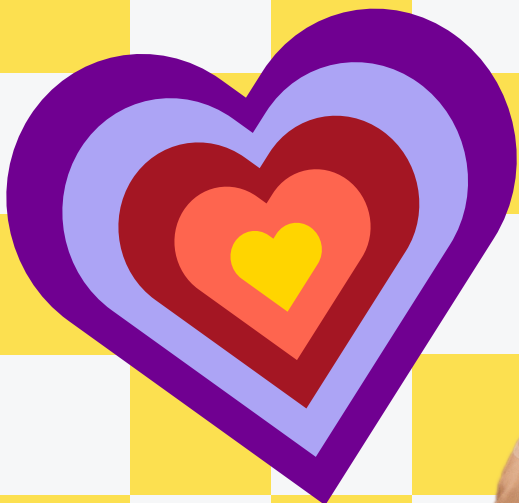
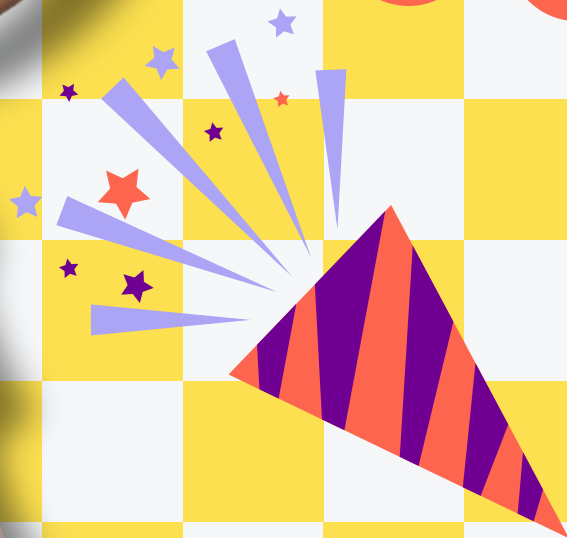
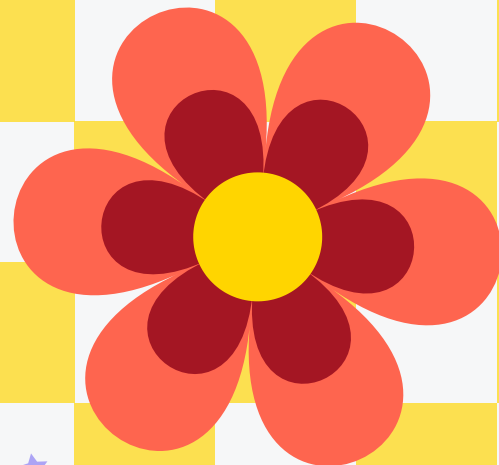
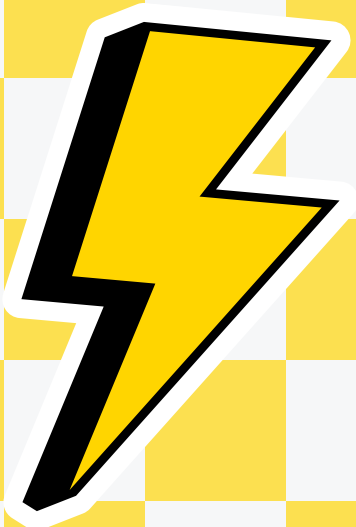
SPOTLIGHT DANCEWORKS

2024-2025

CLASS SCHEDULE



PRIORITY REGISTRATION BEGINS 7/29
OPEN REGISTRATION BEGINS 8/5



25 YEARS OF
EXCELLENCE
SPOTLIGHT
DANCEWORKS

REGISTER AT SPOTLIGHTDANCEWORKSMI.COM

SPOTLIGHTDANCEWORKS

2024-2025

TINY TOT CLASSES (2-3)

TUESDAY

10:00-10:30 MUSIC & MOVES (AT)

6:30-7:00 MUSIC & MOVES (AK)

WEDNESDAY

10:00-10:30 MUSIC & MOVES (AT)

TINY TOT TEACHERS

AK - ASHLEE KOMPH

AMT - ANNA TARAVELLA

AT - ASHLEY TARAVELLA

REGISTER AT [SPOTLIGHTDANCEWORKSMI.COM](https://spotlightdanceworksmi.com)

SPOTLIGHTDANCEWORKS

2024-2025

PRE CLASSES (3-4)

MONDAY

5:00-5:45 PRE ACRO (AT)
5:45-6:30 PRE BALLET/TAP (AT)

TUESDAY

10:30-11:15 PRE BALLET/TAP (AT)
11:20-12:05 PRE ACRO (AT)
4:30-5:00 PRE HIP HOP (SS)
5:00-5:45 PRE BALLET/TAP (EF)

WEDNESDAY

10:30-11:15 PRE BALLET/TAP (AT)
11:20-12:05 PRE ACRO (AT)
5:00-5:45 PRE BALLET/TAP (KA)
5:45-6:30 PRE ACRO (AMT)
6:30-7:00 PRE HIP HOP (AT)

THURSDAY

4:15-5:00 PRE ACRO (AMT)
5:00-5:45 PRE BALLET/TAP (AMT)
5:45-6:15 PRE HIP HOP (JM)
6:15-7:00 PRE BALLET/TAP (JM)

SATURDAY

9:30-10:15 PRE BALLET/HH (JM)

PRE TEACHERS

AK - ASHLEE KOMPH
AMT - ANNA TARAVELLA
AT - ASHLEY TARAVELLA
EF - ELIZABETH FADELL
JM - JENNY MURRAY
KA - KAITLIN ARENA
SS - SARA SELLERS

REGISTER AT [SPOTLIGHTDANCEWORKSMI.COM](https://spotlightdanceworksmi.com)

SPOTLIGHTDANCEWORKS

2024-2025

MINI CLASSES (K-2ND GRADE/AGES 5-7)

MONDAY

5:00-5:45 MINI HIP HOP (JM)
5:45-6:30 MINI ACRO (KA)
6:35-7:20 MINI BALLET (AT)
7:20-8:05 MINI JAZZ (AT)

TUESDAY

5:00-5:45 MINI TAP (AK)
5:45-6:30 MINI BALLET (EF)
5:45-6:30 MINI ACRO (SS)
6:35-7:20 MINI HIP HOP (SS)
7:20-8:05 MINI ACRO (SS)

WEDNESDAY

5:00-5:45 MINI ACRO (AT)
5:00-5:45 MINI TAP (AMT)
5:45-6:30 MINI HIP HOP (JM)
6:35-7:20 MINI JAZZ (SB)
7:20-8:05 MINI BALLET (LS)

THURSDAY

5:00-5:45 MINI BALLET (JM)
5:45-6:30 MINI ACRO (AMT)
6:35-7:20 MINI JAZZ (AMT)
7:20-8:05 MINI TAP (AMT)

SATURDAY

10:15-11:00 MINI BALLET (JM)
11:00-11:45 MINI JAZZ/HH (JM)

MINI TEACHERS

AK - ASHLEE KOMPH
AMT - ANNA TARAVELLA
AT - ASHLEY TARAVELLA
EF - ELIZABETH FADELL
JM - JENNY MURRAY
KA - KAITLIN ARENA
LS - LIZ SCHMIDT
SB - SHELBY BENSINGER
SS - SARA SELLERS

REGISTER AT [SPOTLIGHTDANCEWORKSMI.COM](https://spotlightdanceworksmi.com)

SPOTLIGHTDANCEWORKS

2024-2025

JUNIOR CLASSES
(3RD-6TH GRADE/AGES 8-11)

MONDAY

5:00-5:45 JUNIOR BALLET (KA)
5:45-6:30 JUNIOR JAZZ/HH (JM)
6:35-7:20 JUNIOR CONTEMP (KA)
7:20-8:05 JUNIOR TAP (JM)

TUESDAY

5:00-5:45 JUNIOR HIP HOP (SS)
5:45-6:30 JUNIOR JAZZ (AK)
6:35-7:20 JUNIOR BALLET (EF)
7:20-8:05 JUNIOR CONTEMP (AK)
7:20-8:05 JUNIOR ACRO (AMT)

WEDNESDAY

7:00-7:45 JUNIOR ACRO (AMT)
7:45-8:30 JUNIOR JAZZ/HH (AMT)

JR TEACHERS

AK - ASHLEE KOMPH
AMT - ANNA TARAVELLA
EF - ELIZABETH FADELL
JM - JENNY MURRAY
KA - KAITLIN ARENA
SS - SARA SELLERS

REGISTER AT [SPOTLIGHTDANCEWORKSMI.COM](https://spotlightdanceworksmi.com)

SPOTLIGHTDANCEWORKS

2024-2025

**TEEN CLASSES
(6TH-12TH GRADE)
TEEN ADV CLASSES
(8TH-12TH GRADE)
*WITH INSTRUCTOR PERMISSION***

WEDNESDAY

5:00-5:45 TEEN JAZZ (JM)
5:45-6:30 TEEN BALLET (KA)
6:35-7:20 TEEN CONTEMP (JM)
7:20-8:05 TEEN TAP (JM)
8:05-8:50 TEEN/TEEN ADV HH (JM)

THURSDAY

4:45-5:45 TEEN ADV BALLET (KA)
5:45-6:30 TEEN ADV CONTEMP (KA)
6:35-7:20 TEEN ADV JAZZ (KA)
7:20-8:05 TEEN ADV TAP (JM)

FRIDAY

7:15-8:00 TEEN ACRO (KA)
NO RECITAL DANCE

TEEN TEACHERS

JM - JENNY MURRAY
KA - KAITLIN ARENA

REGISTER AT SPOTLIGHTDANCEWORKSMI.COM

SPOTLIGHTDANCEWORKS

2024-2025

PRICING & OTHER INFO

30 MINUTE CLASS

\$46 MONTHLY (SEPT-MAY)

45 MINUTE CLASS

\$52 MONTHLY (SEPT-MAY)

60 MINUTE CLASS

\$57 MONTHLY (SEPT-MAY)

MULTIPLE CLASS DISCOUNT

\$5 OFF EACH ADDITIONAL CLASS PER FAMILY (MONTHLY)

BOYS DISCOUNT

1ST CLASS FULL PRICE, 2ND CLASS FREE (1 PER FAMILY)

REGISTRATION FEE

\$25 PER FAMILY (ANNUAL)

REGISTRATION FEE AND SEPTEMBER TUITION ARE DUE AT THE TIME OF REGISTRATION TO SECURE YOUR DANCER'S SPOT

TUITION DOES NOT INCLUDE RECITAL COSTUME, SHOES/TIGHTS, RECITAL PACKAGE, ETC.
TUITION IS THE SAME EACH MONTH REGARDLESS OF HOW MANY CLASSES ARE HELD.
YEARLY TUITION IS SPLIT INTO 9 EQUAL MONTHLY PAYMENTS FOR YOUR CONVENIENCE.

REGISTER AT SPOTLIGHTDANCEWORKSMI.COM